

Our past, your future: making
the most of what we've got



'A critical evaluation of context'

Robin Nicholson CBE RIBA
CULLINAN STUDIO, a senior partner
The EDGE, convenor

Some images may be subject to copyright but are used
for educational purposes



1965



2002



Hooke Park 1997 revisited 2015



National Automotive Innovative Centre at the University of Warwick:
design and research centre for JLR and Tata Motors 33,000m²



The Edge is a multi-disciplinary think-tank for professionals in the Built Environment:

- Set up 1996 with support of the Arup Foundation to bring civil engineers and architects closer together
- Meets monthly in one of our offices in London
 - To consider current and future challenges
 - To promote inter-disciplinarity
- 75 by-invitation debates, mainly in London, see www.edgedebate.com



**Collaboration for Change:
The Morrell Report on future professionalism**

The Edge invited Paul Morrell to chair a Commission of inquiry into the future of professionalism in the built environment/construction industry. His report explores the key issues facing professionals and their institutions at this "moment for change" arising from globalisation, agglomeration, the ageing industry and some disaffection from the newly qualified. Paul Morrell proposes a small number of key projects for groups of institutions to develop collaboratively in the public interest. Reports from the four Edge Debates and the four succinct keynote papers are included along with a list of all the proposals made. He was assisted by a multi-disciplinary Panel of five professionals who debated the issues with ten institutions at the Building Centre with support from Rehaus. The report and its dissemination has been generously supported by the Arup Foundation.

The Morrell Report on
Future Professionalism



The Morrell Report on
Future Professionalism

The Ove Arup Foundation



6 Tasks for the Institutions to collaborate on:

- Ethics ✓
- Research dissemination ✓
- Cross-disciplinary education?
- **Climate change X**
- Industry Change X
- The Performance Gap ✓

France floods: Louvre to close as Seine rises further

BBC NEWS 2 June 2016



BERTRAND GUAY/AFP/GETTY IMAGES

Buildings are responsible for 40% of Green House Gases but do we care.... enough?



Making the most of what we've already got?



Altrincham Market 11th Oct 2016

Our past, your future: making
the most of what we've got

Context:

- Topography
- Climate
- Culture



'A critical evaluation of context'

- Lessons from St Paul(s)
- 2 retrofits
- 2 visitor centres

Our past, your future: making
the most of what we've got



'A critical evaluation of context'

Lessons from St Paul(s)

- The myth of economic growth
- Diminishing resources
- Climate change
- Wars

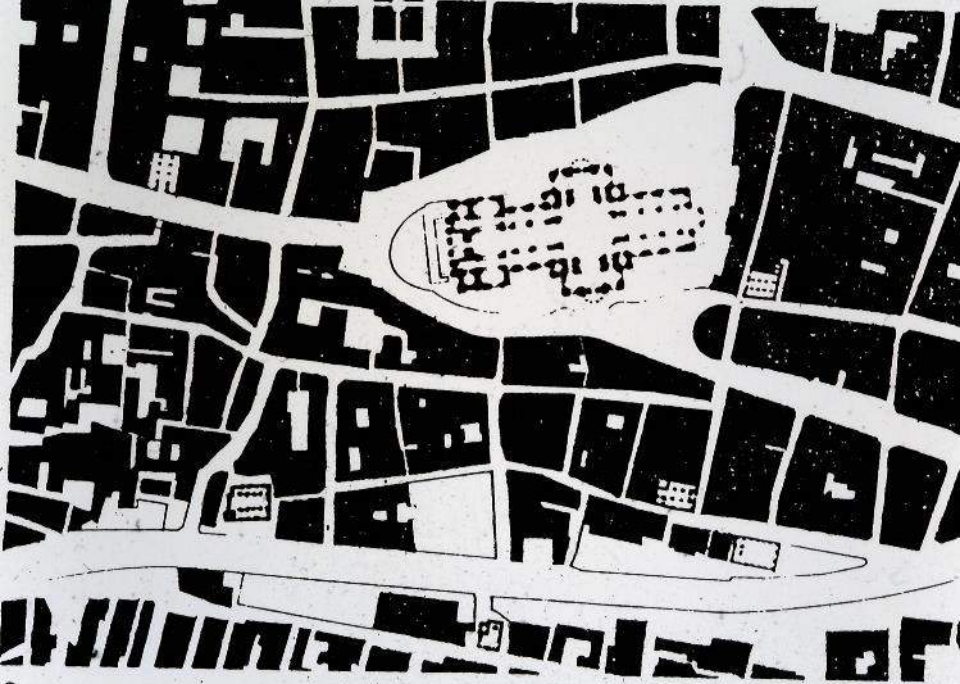


St Paul's Cathedral 1945

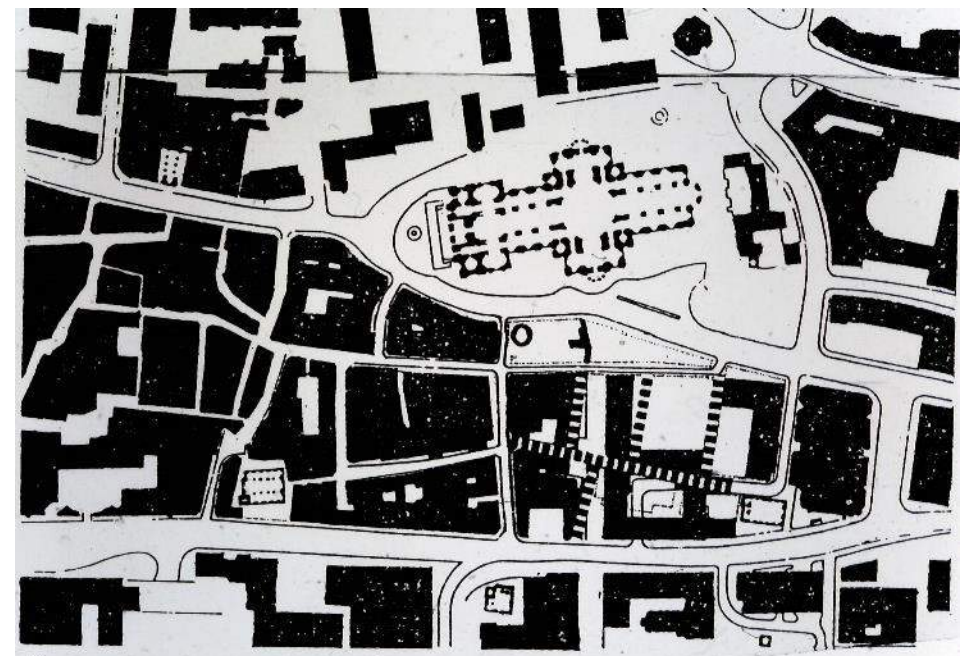


St Paul's Cathedral 1945

But now in Europe we need to make much better use of the buildings we have already got!



2. OLD LONDON AS NOLI



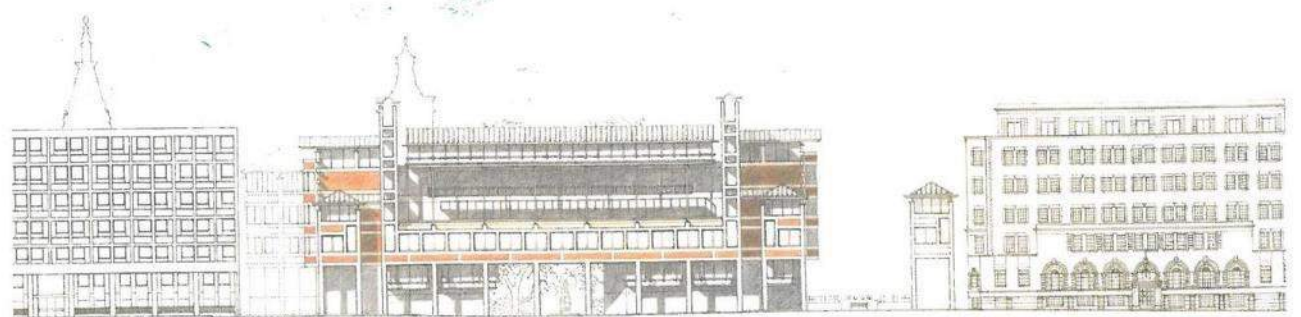
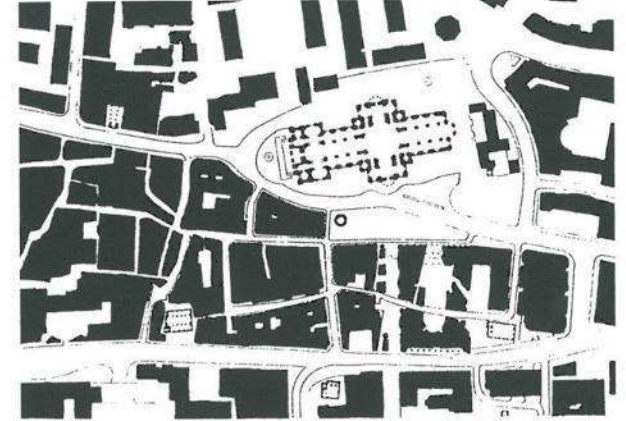
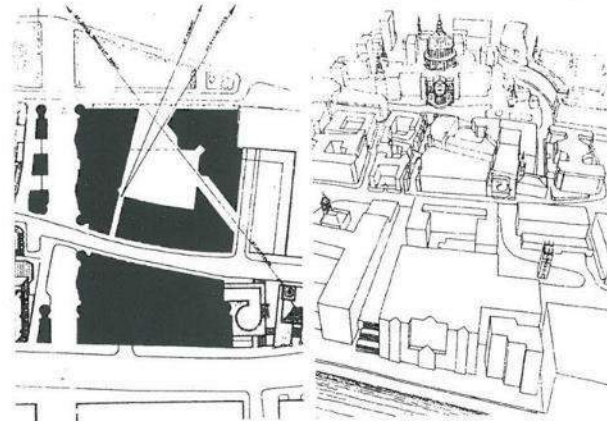
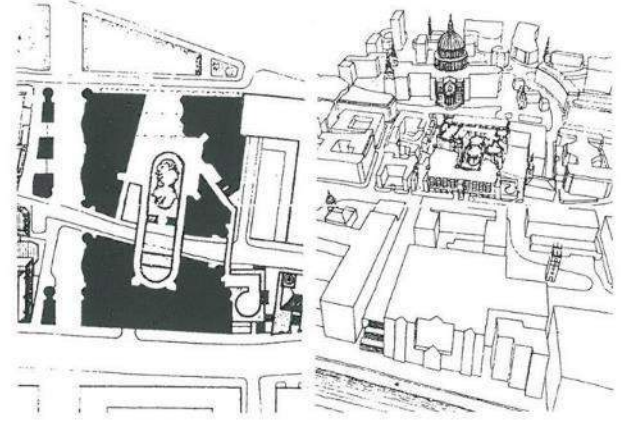
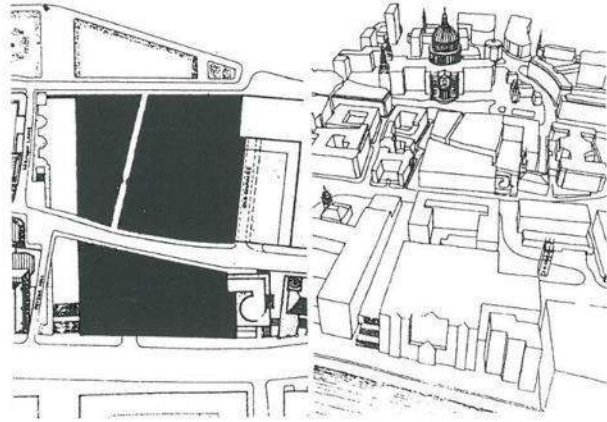
5.

HISTORIC STREETS

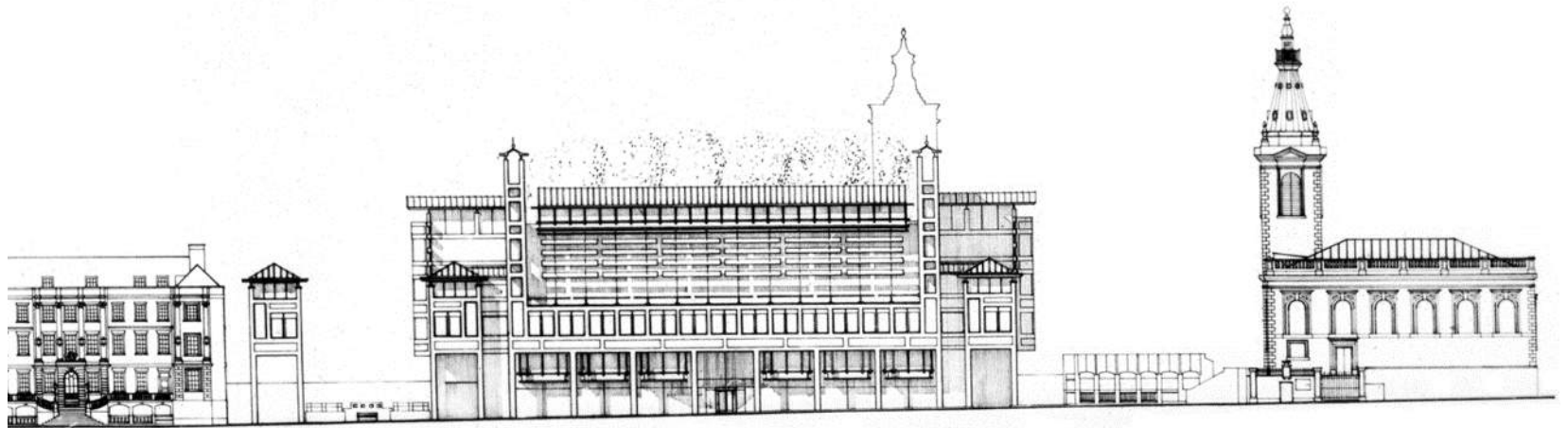
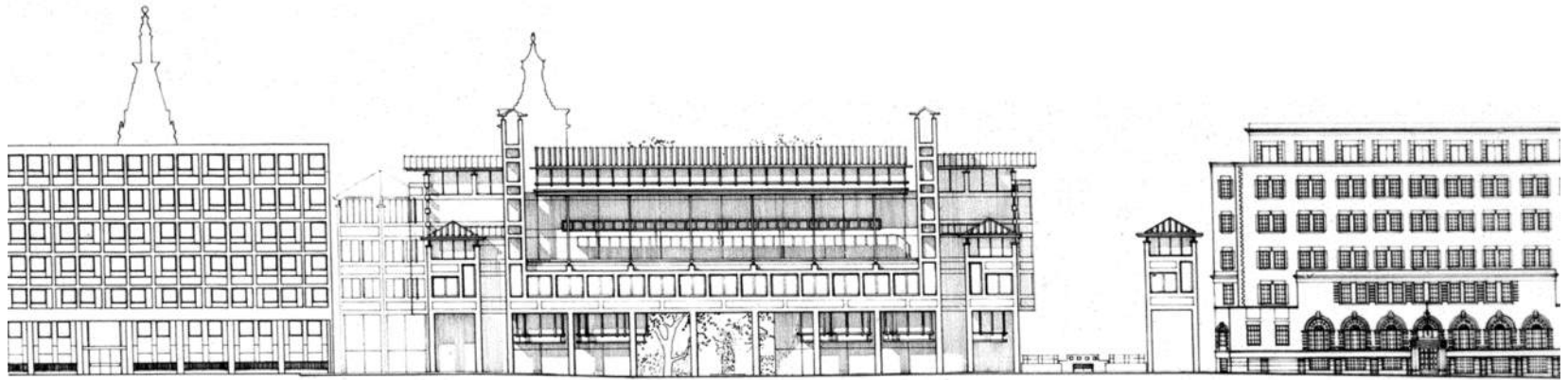
Winning submission for the redevelopment of Petershill House, Carter Lane, London, 1989-1991

Erosion of the block within a figure ground allowed the new offices to follow the street pattern with a central courtyard cut by Knightrider Street and views to surrounding church towers.

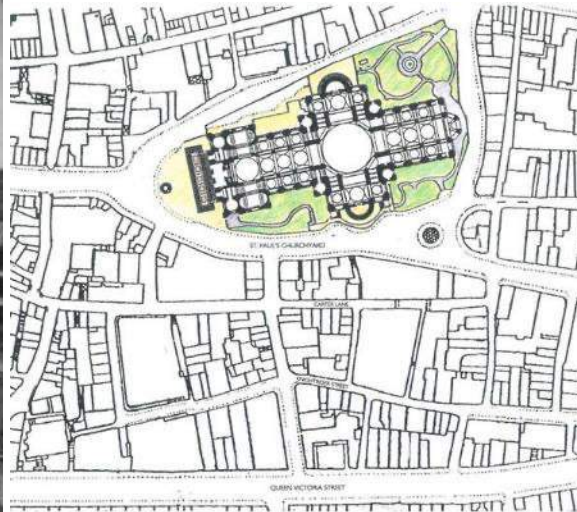
Petershill Lane is lowered to provide a full view of the south transept of St Paul's. The north elevation provides a grandstand for the Lord Mayor's Parade.



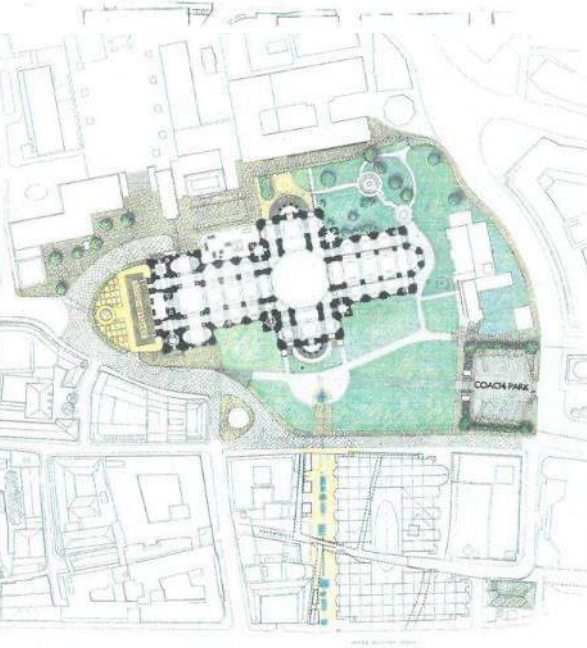
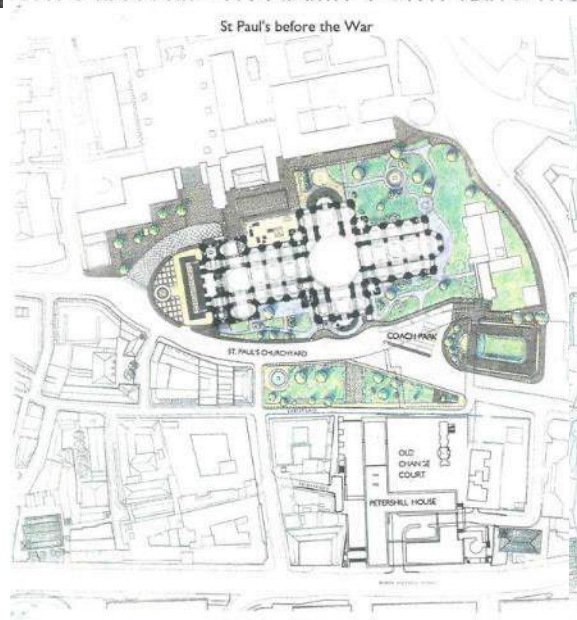
Won in competition 1989
Stopped by recession in 1991







St Paul's before the War



St Paul's today

A new Close, with coaches parked on surface and screened by Temple Bar



Wren's Temple Bar was built in Fleet Street but then moved to Hertfordshire in 1878





Blacks

Financial Services
around the square

PAUL

S. PAUL'S
CATHEDRAL

Services

- 10am Daily Prayer
- 11am Morning Prayer
- 12.30pm Daily Prayer
- 6.30pm Evensong
- 9pm Vespers

More from St Paul's

- 10am Daily Prayer
- 11am Morning Prayer
- 12.30pm Daily Prayer
- 6.30pm Evensong
- 9pm Vespers

Our past, your future: making
the most of what we've got



'A critical evaluation of context'

2 retrofits

- My office
- My home



JOINT PUBLICATION

ENDS MIDDLES BEGINNINGS

EDWARD CULLINAN ARCHITECTS

1991-2011

1. Existing Fabric Retained
2. Recycled Newspaper
3. Natural Ventilation
4. Air Source Heat Pump
5. 22m² PV Panels
6. Heat Recovery
7. Underfloor Heating















#IslandEstate
#GreenSkyThinking

@CullinanStudio

ISLAND ESTATE



CULLINAN STUDIO

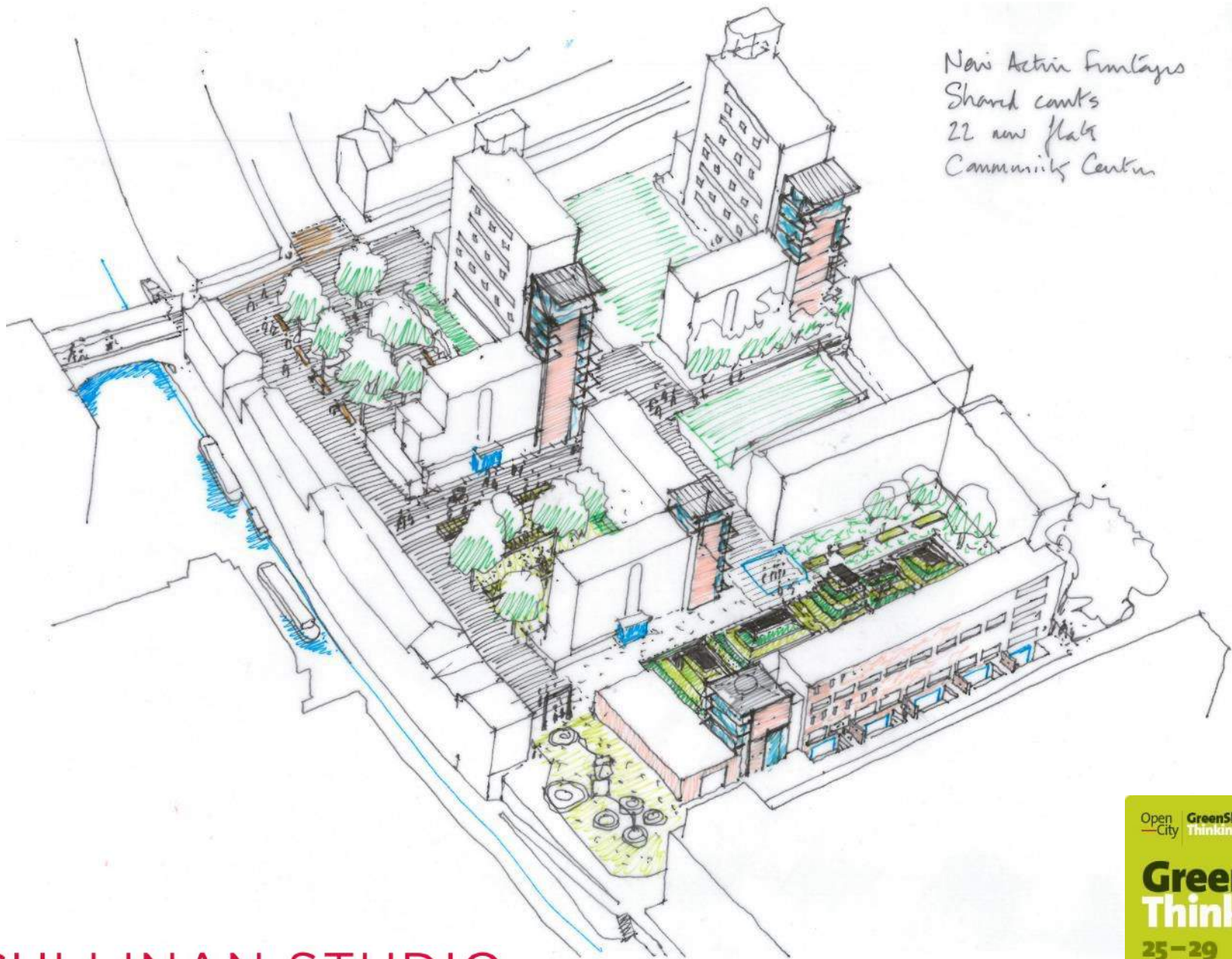
Open City GreenSky Thinking

GreenSky Thinking

25-29 April 2016







New Active Frontages
Shared courts
22 new flats
Community Centre

CULLINAN STUDIO

Open City GreenSky Thinking

GreenSky Thinking

25-29 April 2016

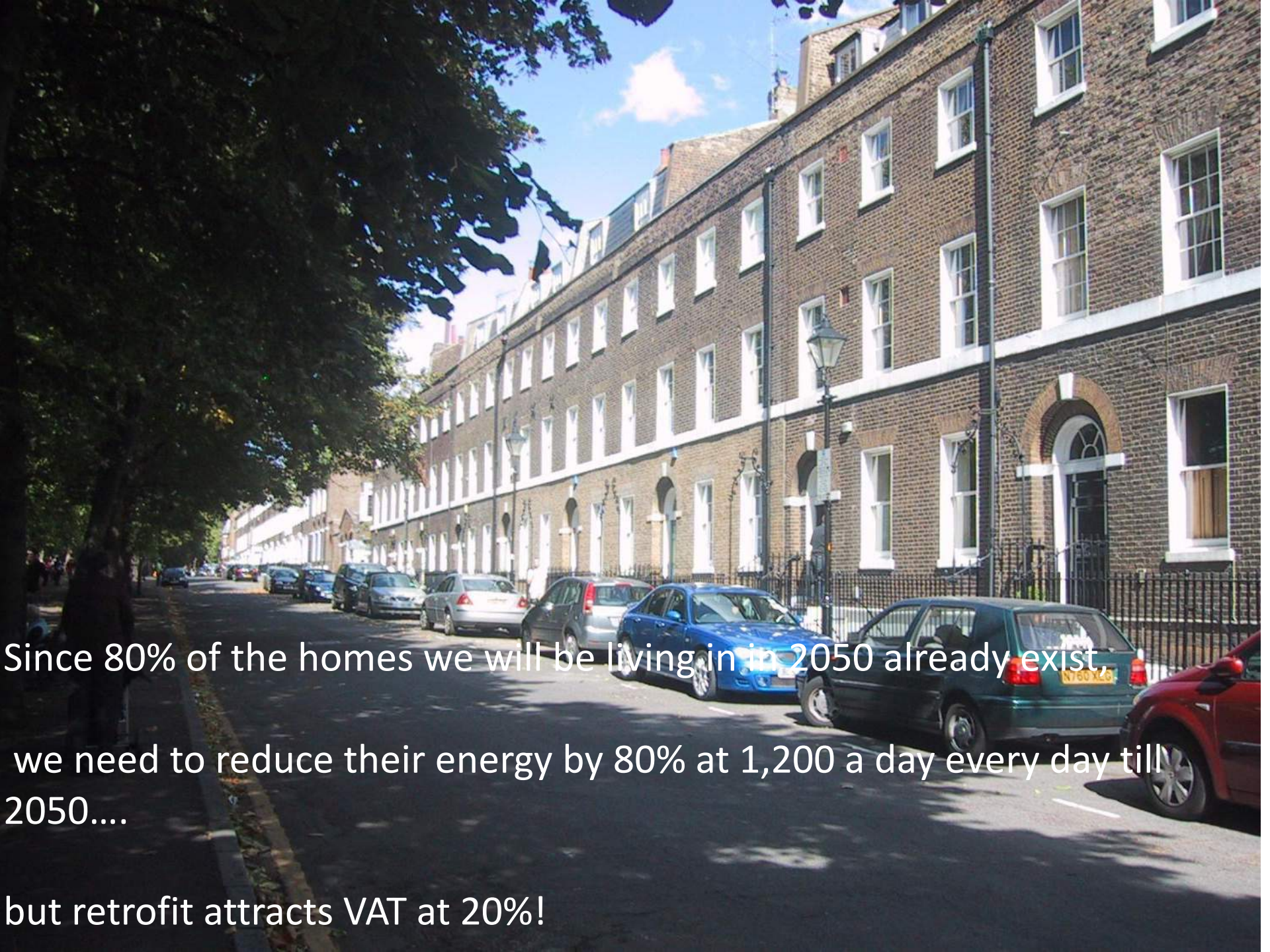


Climate Change Act 2011 requires UK to reduce our emissions by 34% by 2020 and 80% by 2050



View of Highbury Terrace in 1953 – originally built in 1776



A photograph of a city street lined with multi-story brick buildings. The buildings have many windows and some have arched doorways. Several cars are parked along the street, including a blue car and a dark green car. The scene is bright and sunny, with shadows cast on the pavement. Large trees are visible on the left side of the street.

Since 80% of the homes we will be living in in 2050 already exist,
we need to reduce their energy by 80% at 1,200 a day every day till
2050....

but retrofit attracts VAT at 20%!



But many houses have been split into flats
and the whole street has been listed (ie protected)





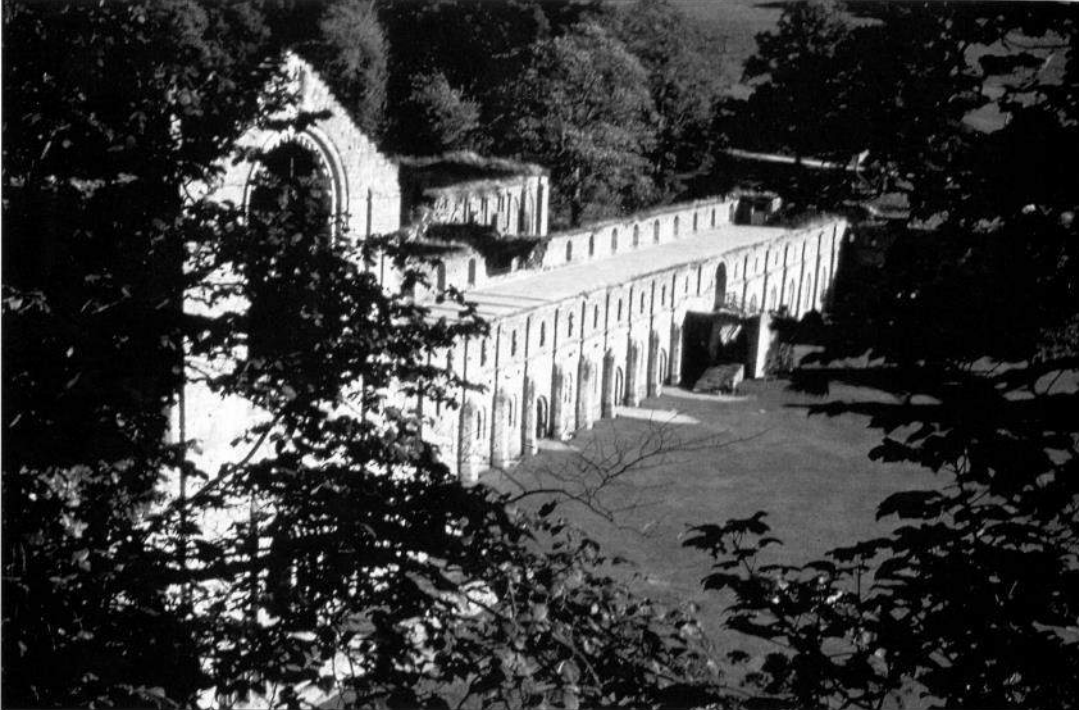
Our past, your future: making
the most of what we've got



'A critical evaluation of context'

2 visitor centres

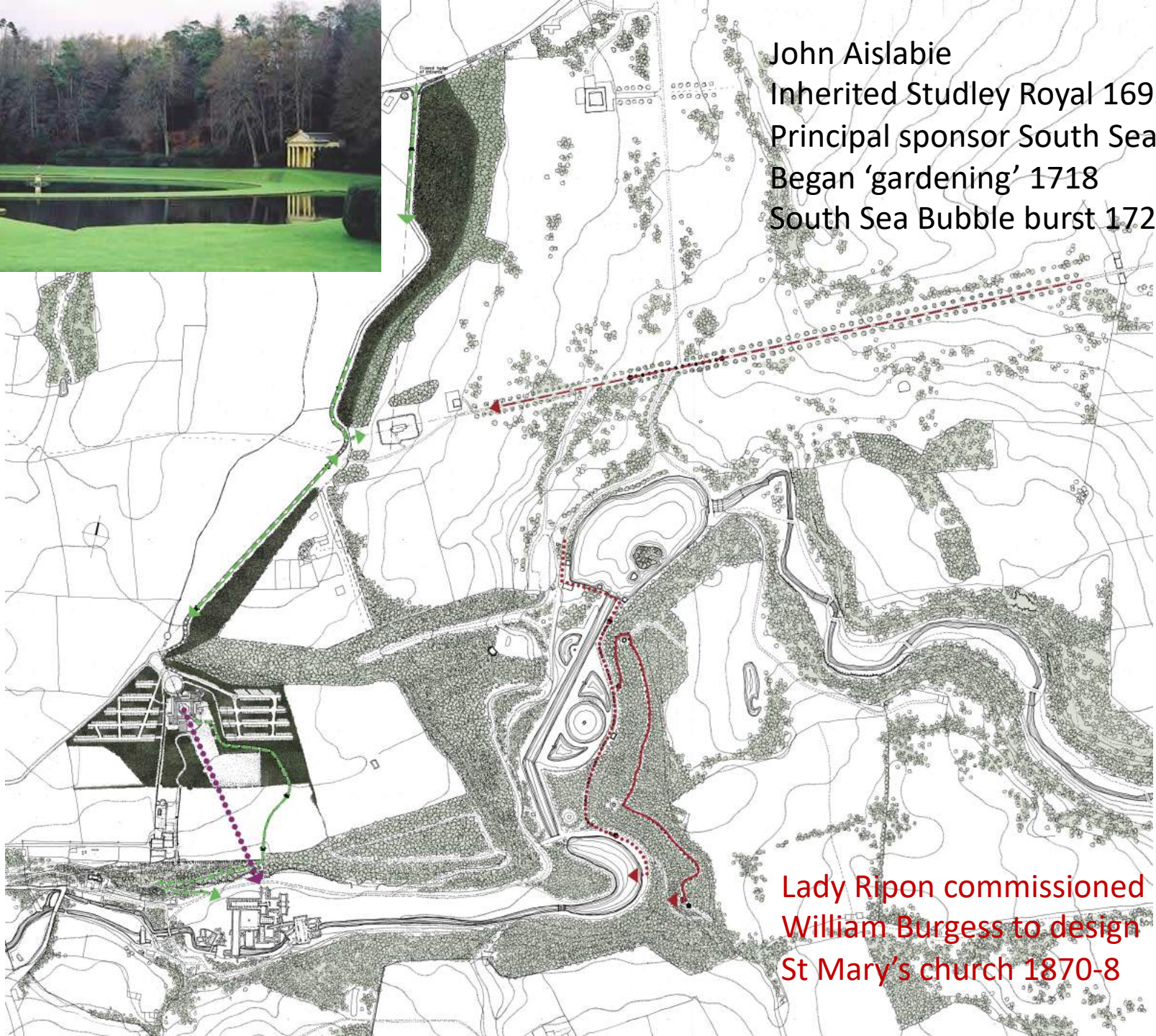
- Fountains Abbey, Yorkshire
- Petra, Jordan



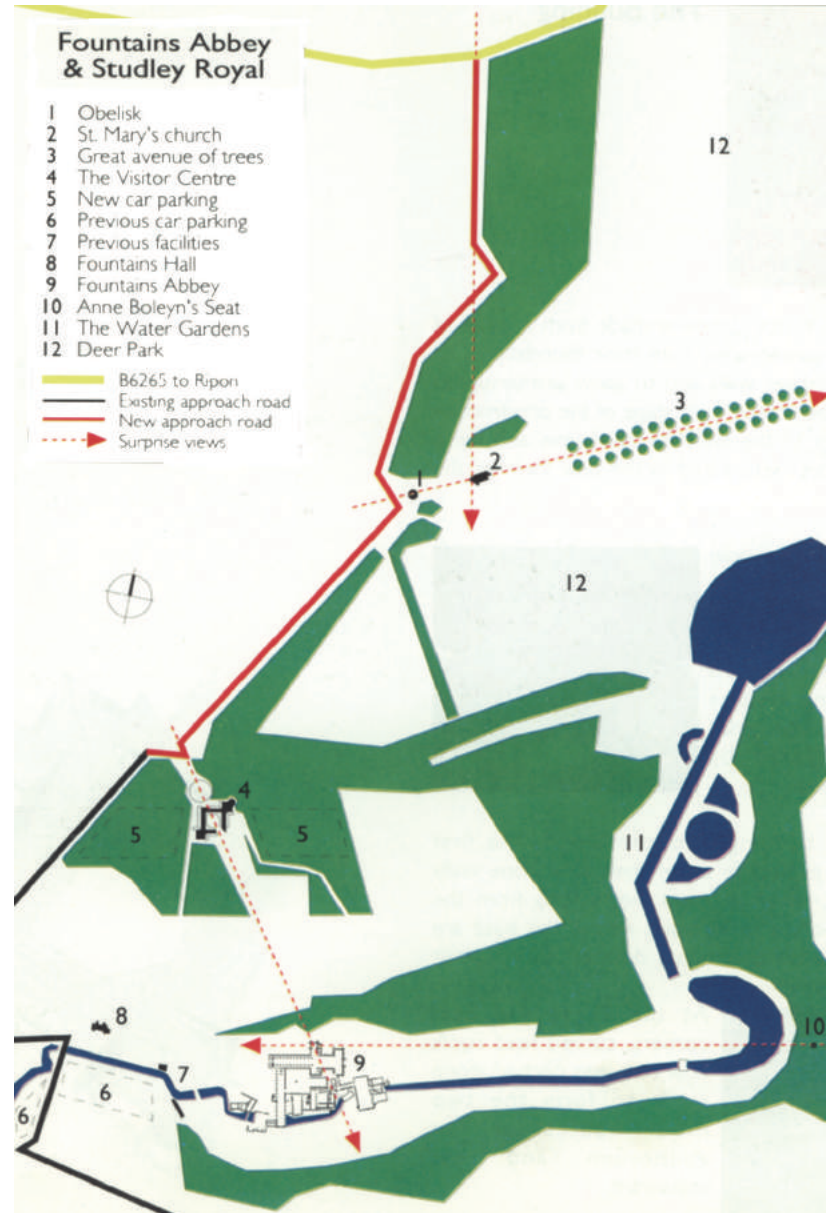
- Fountains Abbey
- Founded 1132
 - Dissolved 1539

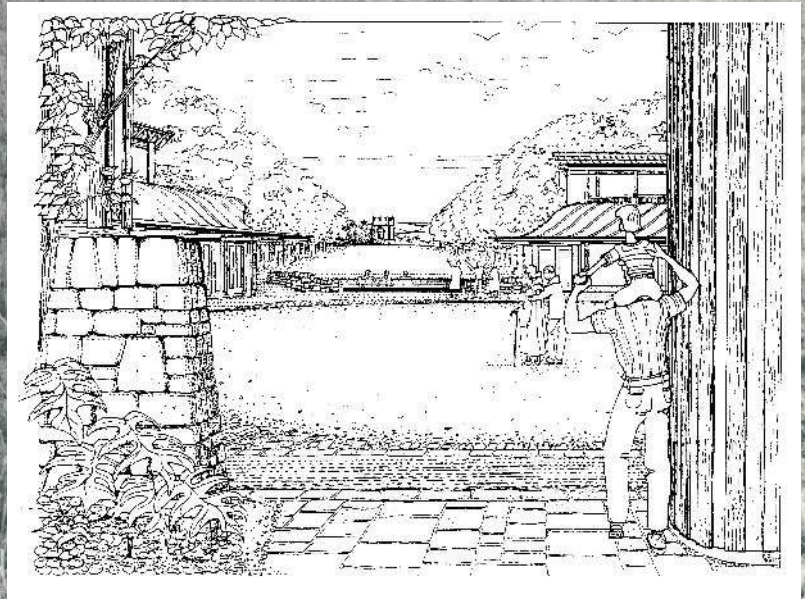


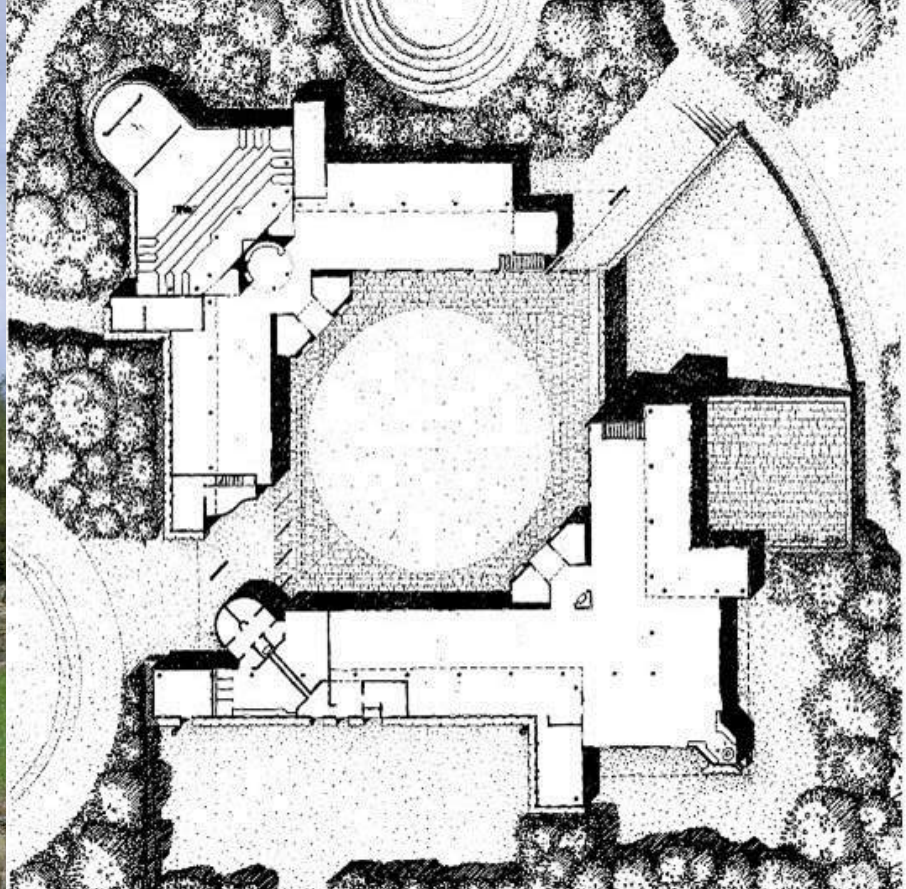
John Aislable
Inherited Studley Royal 1695
Principal sponsor South Sea Co.
Began 'gardening' 1718
South Sea Bubble burst 1720



Lady Ripon commissioned
William Burgess to design
St Mary's church 1870-8

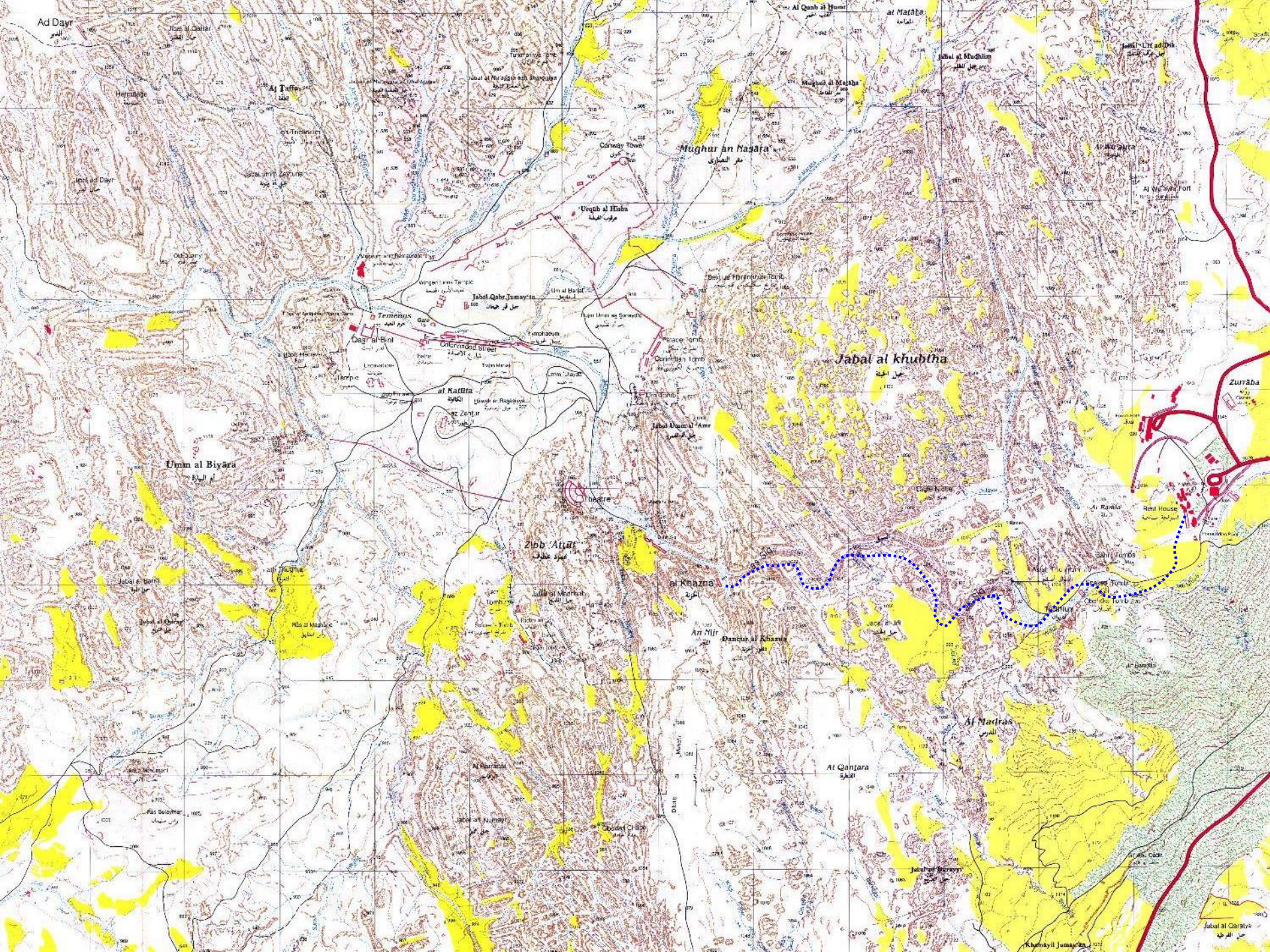






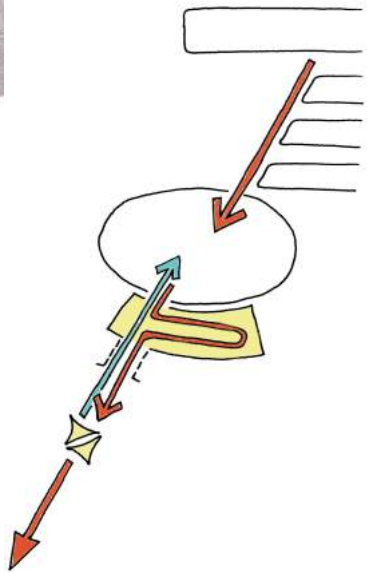








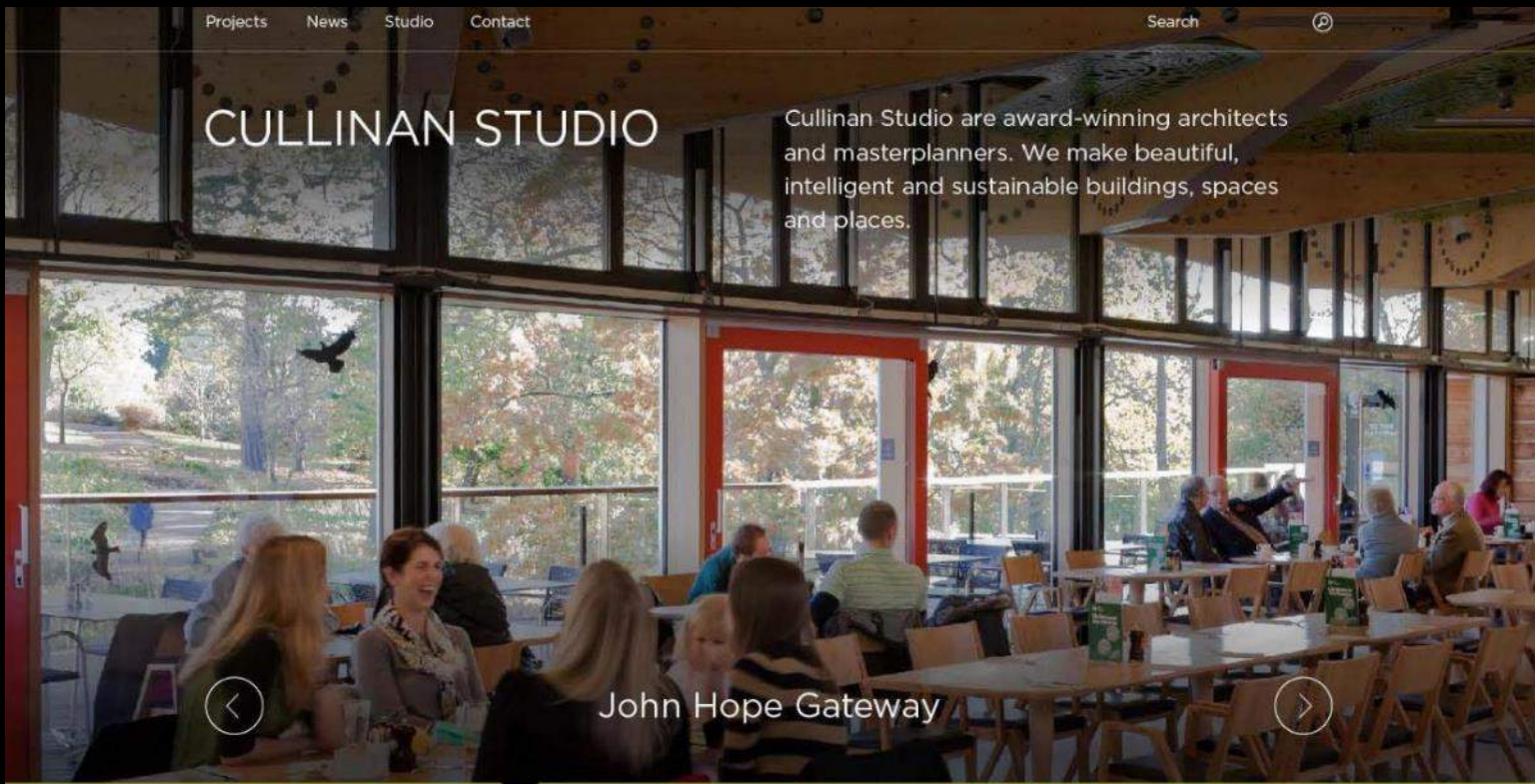






CULLINAN STUDIO

Cullinan Studio are award-winning architects and masterplanners. We make beautiful, intelligent and sustainable buildings, spaces and places.



John Hope Gateway



CLIMATE

COLLABORATION

CREATIVITY

Sustainability runs right through our work — economic, social and environmental



Stonebridge Hillside Hub



Shahat Garden City Masterplan

@RobinNichols14 blogs for @BuildingNews 'How can we decide where to invest?' <http://bit.ly/1dYx5zx> #hs2 #sustainability

Follow us on Twitter 