



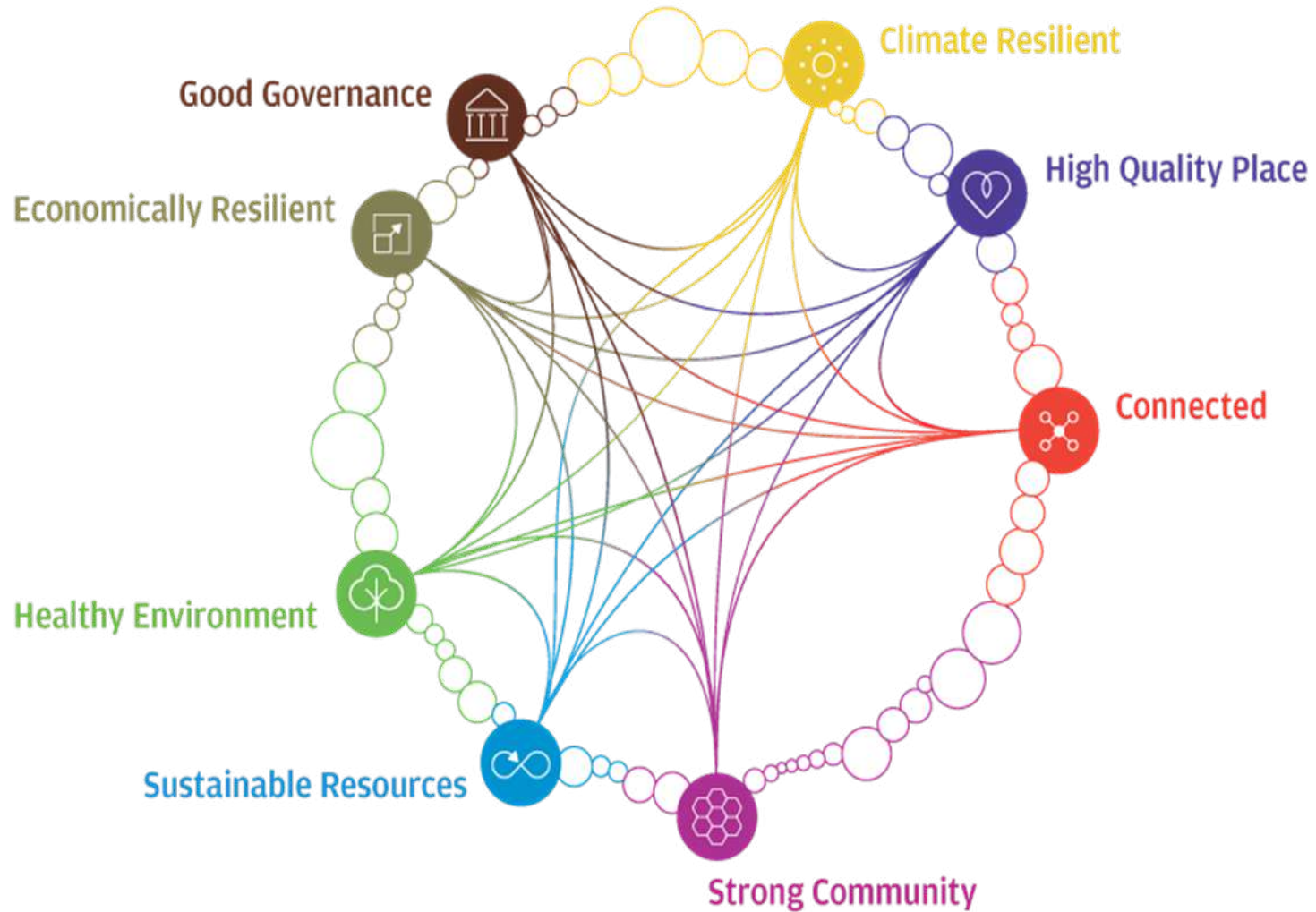
Grosvenor 'Living cities'

Kate Brown

Continued Growth of Cities



Living Cities



High Quality Place



High quality urban environment that enriches people's lives and has a distinctive sense of place which engenders civic pride.



Brown Hart Gardens

New public space

Only meters from Oxford Street Brown Hart Gardens is an oasis of calm and was commended for best public space at the NLA's New London Awards, July 2014



A community hub

Built above the old Duke Street electricity substation the new terrace garden has transformed into a beautiful space used by the community with café, yoga classes and farmers market, as part of a wider regeneration of this part of Mayfair.

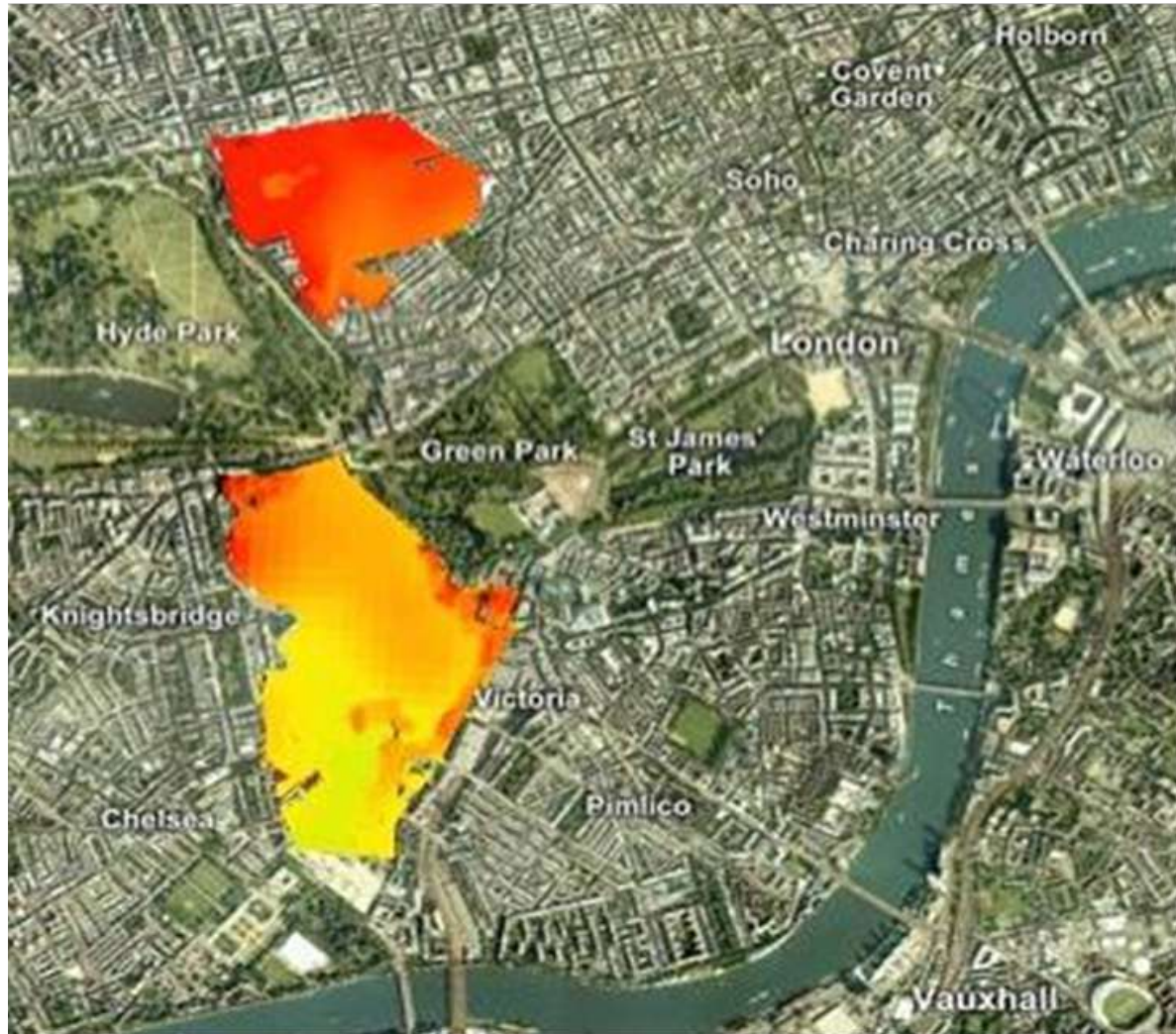
Strong Community



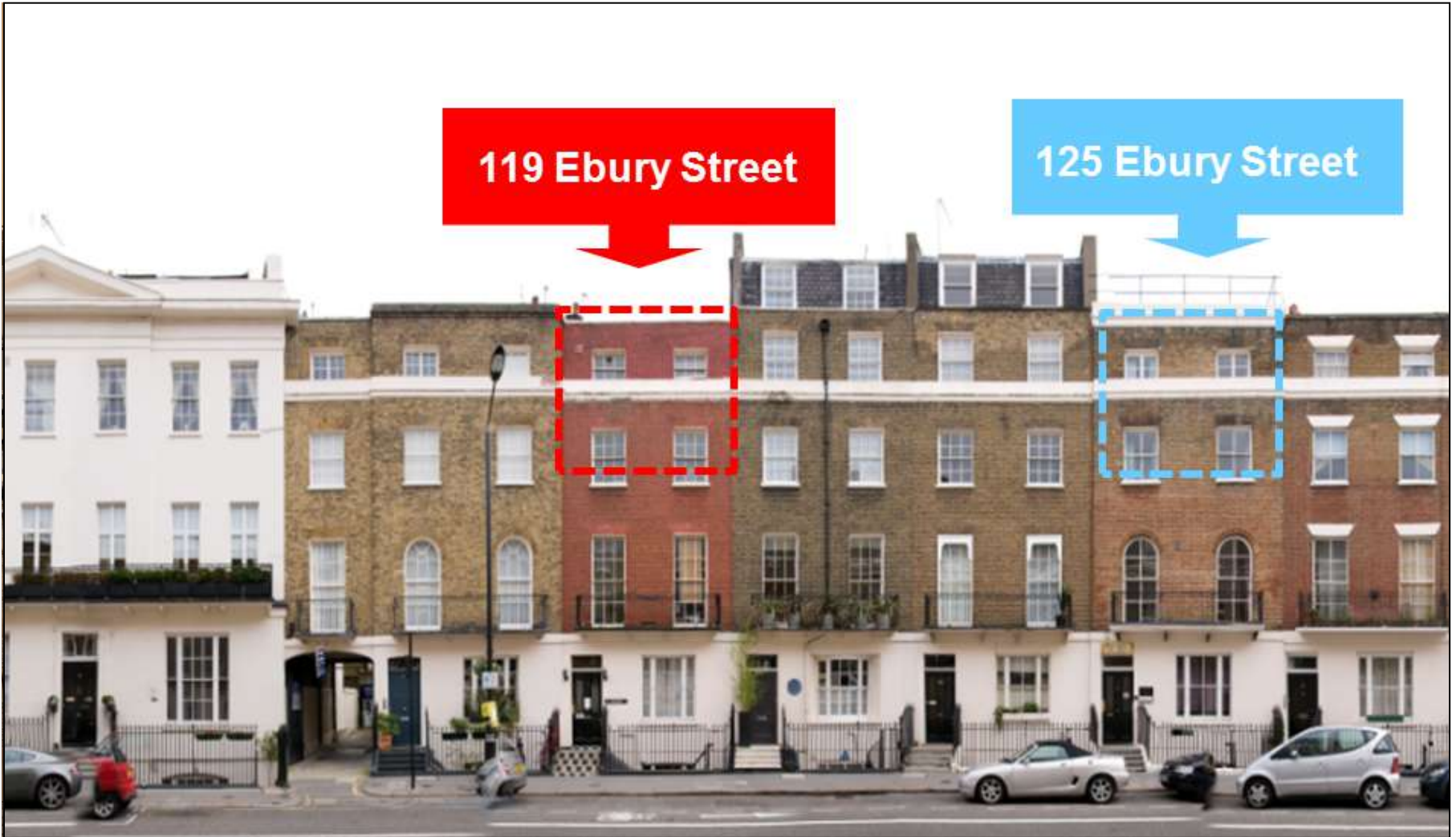
The city's communities are vibrant and healthy, safe, respectful and friendly, inclusive, tolerant, engaged, diverse, accessible, affordable and happy.



London estate retrofit



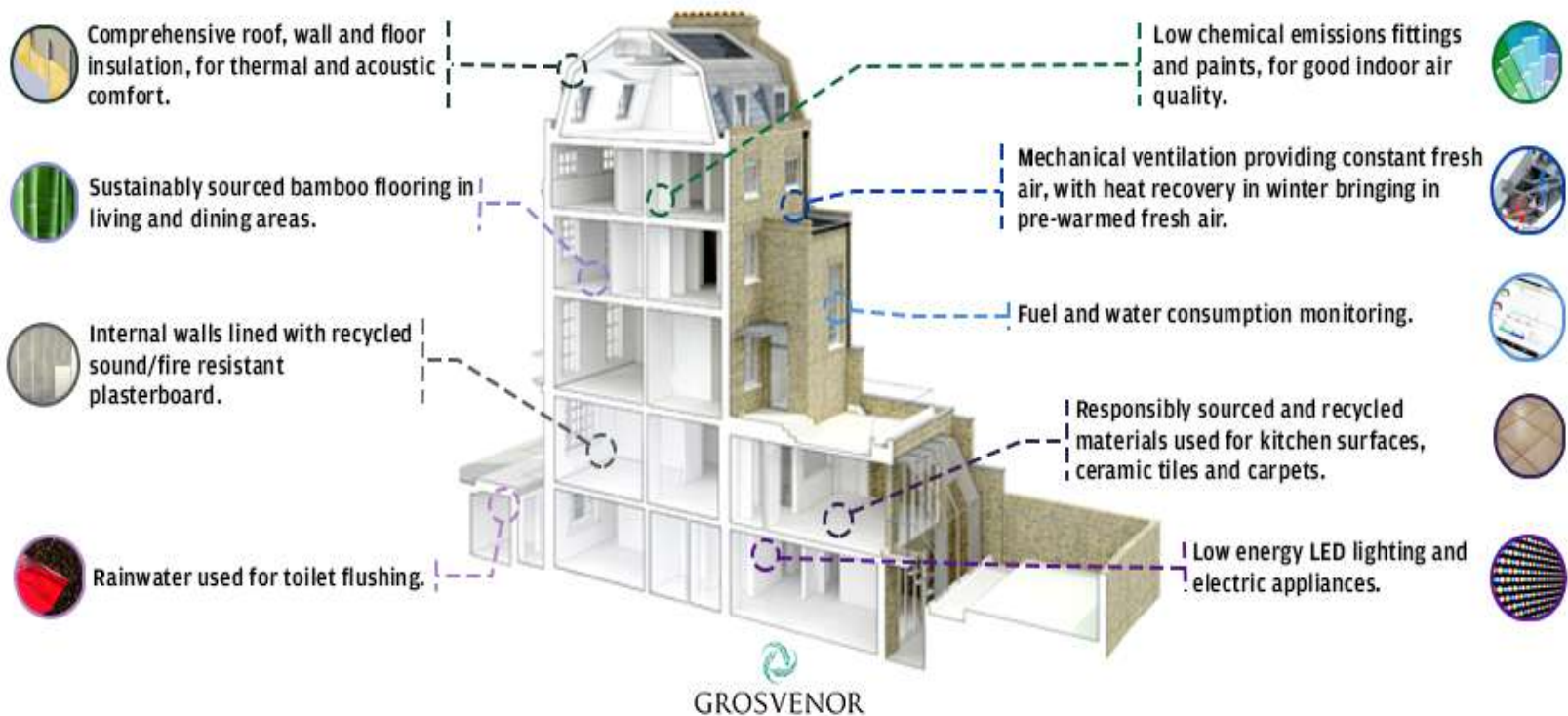
119 Ebury Street, Belgravia, London



Meeting future targets today

119 Ebury Street, Belgravia

First ever listed residential building in the UK to receive BREEAM 'Outstanding' environmental rating.



Liverpool ONE

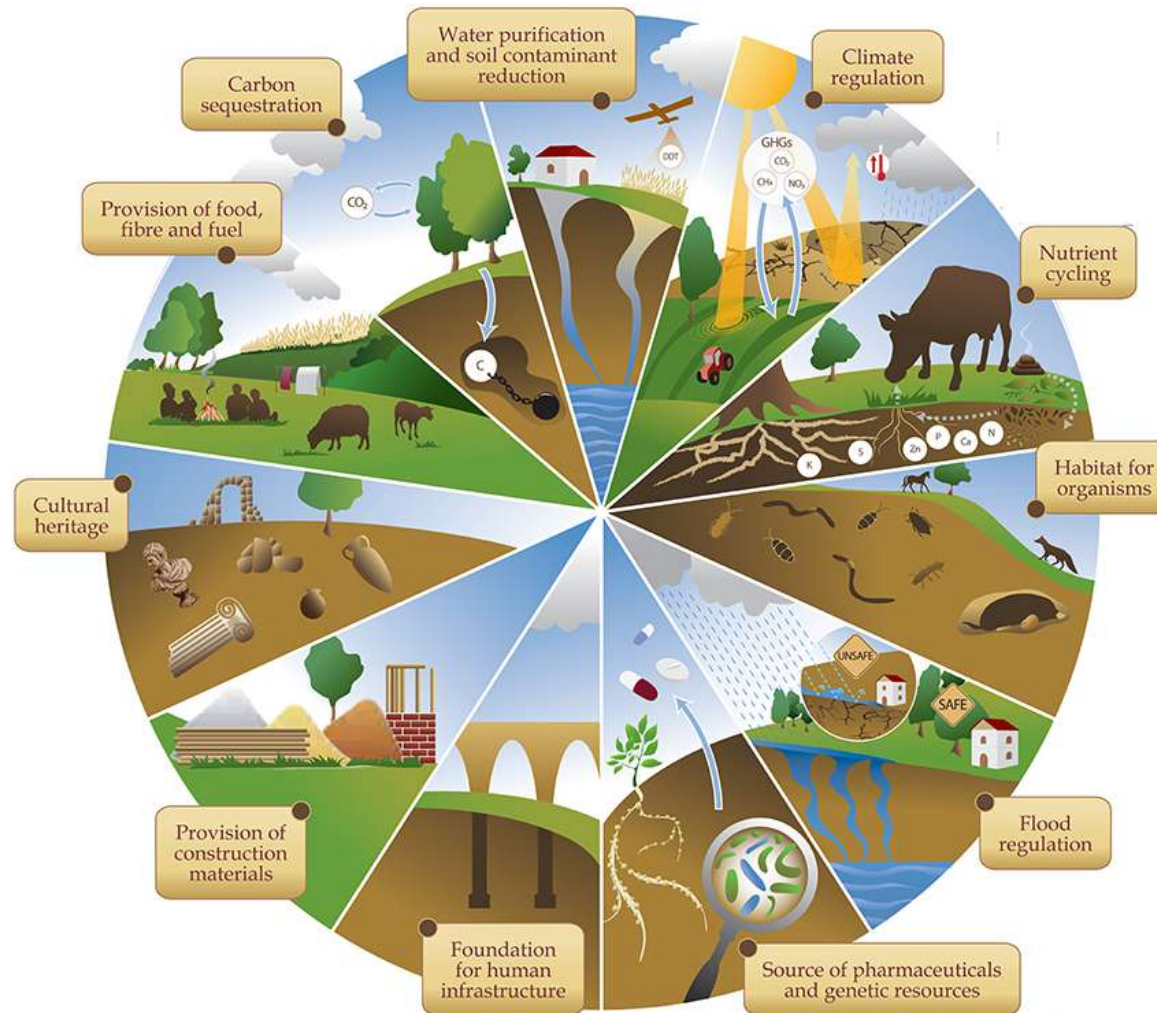
Urban grain

The 42 acre site provided an opportunity to knit together the areas of Albert Docks, the historic waterfront (3 Graces), Ropewalks and the existing shopping offer on Church Street.



Building on the city's heritage and culture
Conceived as 'buildings in the city' rather than a single shopping mall, encompassing existing heritage listed buildings. 22 firms of architects were appointed to design new buildings that would enhance the unique character and appear as if the area had grown up over time.

Natural capital – Ecosystem services



Source: Frontiers in Environmental Science

Focus on: “Services provided”





GROSVENOR